

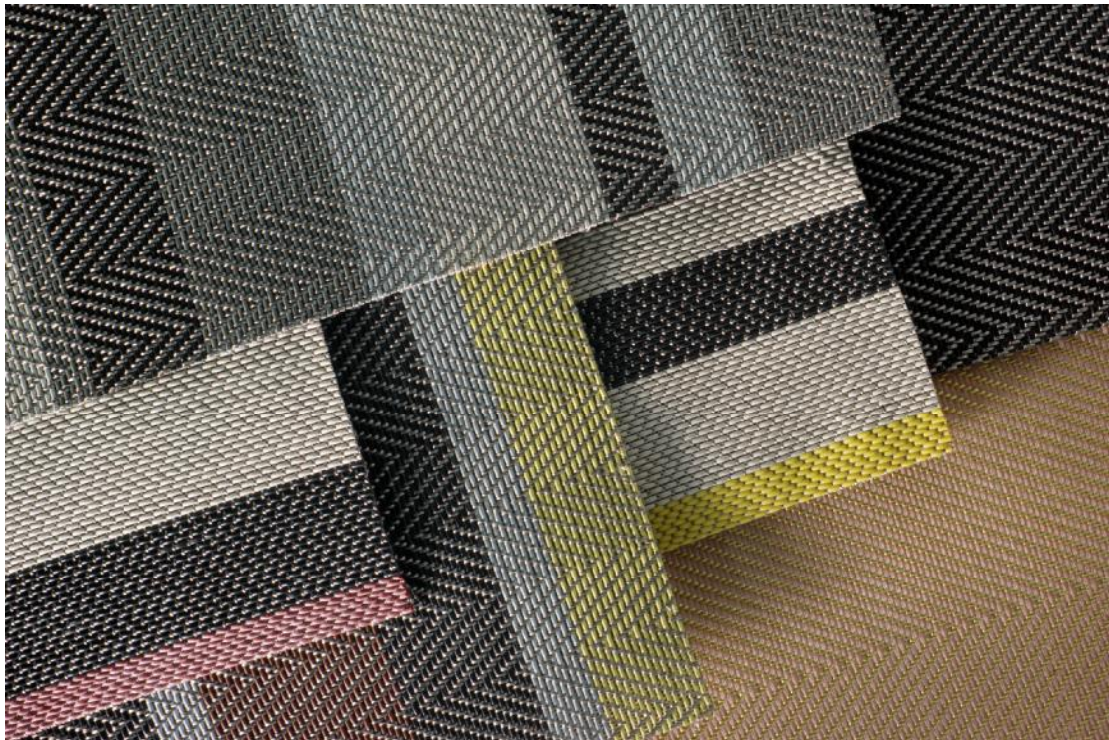
ColourMesh™

Woven wire meshes or ‘metallic fabrics’ have been widely used by architects and interior designers for wall coverings and screening for very many years. Fine examples of these intricate designs, almost exclusively in stainless steel, can be seen in many important buildings throughout the world.

With our new product, *ColourMesh*, we have significantly widened the concept of metallic weaving by introducing an innovative range of semi-metallic meshes that can be used in internal or external applications.

ColourMesh is a radically new architectural material, encompassing the use of stainless steel in the warp (lengthways direction) with distinctive coloured silicone in the weft (crossways direction). The silicone can be positioned in stripes of varying widths using up to four colours per design at a maximum weaving width of 3.0 metres. The stainless steel warp can be substituted by brass wire if thought to be more aesthetically appropriate for a particular application.

Availability of the whole spectrum of colour, including silver and gold, allows bespoke weaving of specific corporate colours for wall claddings, in-store displays, exhibition stands, tensioned structures, facades, balustrades, canopies, solar screens etc.



Night-time enhancement by up-lighting or down-lighting presents new possibilities for exciting colour/stainless steel combinations to whet the appetites of architects and interior designers

Encapsulation of *ColourMesh* within glass panels makes a very interesting material for screening or covering of all types of surfaces.

The Silicone polymer used in the weft is widely used for cable sheathing in areas requiring increased levels of public safety from the point of view of fire resistance and low smoke emissions. ColourMesh has achieved a fire safety rating of Class 0, to BS476: Part 6 & 7: 1989.

The product is tough, durable, and easy to maintain. Silicone has the following excellent properties for outside use:-

High and low temperature stability

Low temperature flexibility

High chemical resistance

High moisture resistance

High abrasion resistance

High UV and weathering resistance

Oxidation virtually nonexistent

Ozone resistance excellent

Mildew and fungus resistance excellent



Short quantity production runs of niche technical textiles are a speciality of our company in all our product areas. *ColourMesh* is very easy to customise to specific designer requirements, as long as the standard stainless steel warp is utilised with any combination of weft colours. In addition to our modern rapier weaving looms, we have our own 'in-house' extrusion facility for production of the weft. This assures total versatility, prompt delivery, and competitive tendering.

The following basic specification of *ColourMesh* provides a guide to what we can offer so that thought can be given to utilisation of the product in specific projects.

Standard manufacturing length: 300 metres

Minimum manufacturing length: 30 metres

Maximum width: 3.0 metres

Minimum woven width: 1.5 metres

Minimum cut width: 0.5metres

Thickness: Typically 2.0 mm

Weave style: Herringbone twill, plain weave, or sateen. Please request samples.

Weight: Typically 3.00 kgs per square metre

Exclusively available directly from the manufacturers:-

MARATHON BELTING LTD.
HEALEY MILL,
WHITWORTH ROAD,
ROCHDALE OL12 0TF
ENGLAND

Telephone: +44 (0)1706 657052
Facsimile: +44 (0)1706 525143

Internet: www.marathonbelting.co.uk
e-mail: sales@marathonbelting.co.uk